

South and Vale GIS
Printed on 17 October 2017
at a scale of 1:6,839



South Oxfordshire District Council is licensed to use Ordnance Survey mapping for its own business use as a member of the Public Sector Mapping Agreement.



Persons viewing this mapping should contact Ordnance Survey copyright for advice where they wish to use Ordnance Survey mapping for their own use.

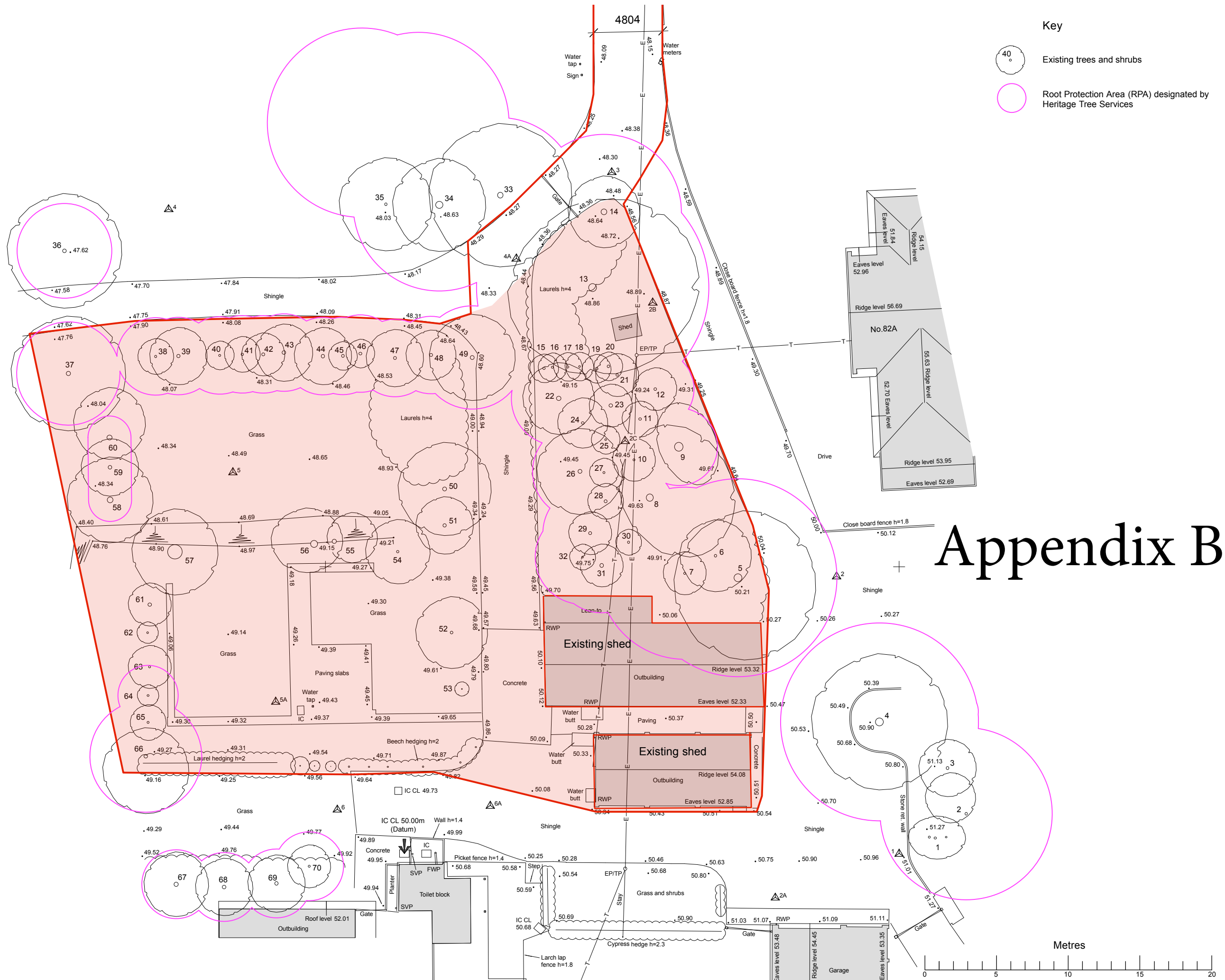
SURVEY STATIONS			
Name	Easting	Northing	Height
1	200.000	500.000	50.960
2	195.646	519.350	50.171
3	179.966	547.536	48.378
4	149.064	544.949	47.519
5	153.536	526.602	48.518
6	160.818	503.084	49.776
2A	191.361	496.943	50.988
2B	182.823	538.444	48.904
2C	180.900	528.789	49.432
4A	173.304	541.506	48.339
5A	156.533	510.602	49.295
6A	171.486	503.351	50.017

Tree Schedule

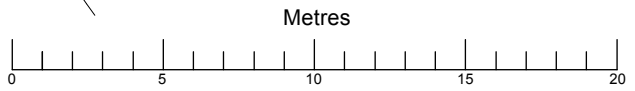
- 1 Cypress multibole h=11
- 2 (?) d=0.18 h=9
- 3 Cypress d=0.2 h=9
- 4 Beech d=0.55 h=17
- 5 Pine d=0.55 h=17
- 6 Cypress d=0.18 h=6
- 7 Spruce d=0.17 h=7
- 8 Fir d=0.5 h=10
- 9 Hazel multibole h=4
- 10 Cypress d=0.15 h=5
- 11 Cypress d=0.18 h=8
- 12 Cypress d=0.2 h=5
- 13 Walnut d=0.55 h=13
- 14 Cypress d=2x0.23 h=14
- 15 Cypress d=0.17 h=7
- 16 Cypress d=0.15 h=6
- 17 Cypress d=0.15 h=4
- 18 Cypress d=0.13 h=4
- 19 Cypress d=0.18 h=12
- 20 Cypress d=0.18 h=12
- 21 Cypress d=0.18 h=5
- 22 Prunus multibole h=4
- 23 Cypress d=0.25 h=12
- 24 Cypress d=0.18 h=10
- 25 Cypress d=0.13 h=9
- 26 Pine d=0.27 h=14
- 27 Cypress d=0.15 h=12
- 28 Cypress d=0.2 h=12
- 29 Cypress d=0.22 h=12
- 30 Cypress multibole h=7
- 31 Cypress d=0.26 h=12
- 32 Cypress d=0.13 h=7
- 33 Sycamore d=0.4 h=12
- 34 Hazel multibole h=7
- 35 Ash d=0.18 h=10
- 36 Sycamore d=0.25 h=10
- 37 (?) multibole h=4
- 38 Cypress d=0.16 h=12
- 39 Cypress d=0.22 h=12
- 40 Cypress d=0.15 h=12
- 41 Cypress d=0.18 h=12
- 42 Cypress d=0.22 h=12
- 43 Cypress d=0.25 h=12
- 44 Cypress d=0.25 h=12
- 45 Cypress d=0.2 h=12
- 46 Cypress d=0.2 h=12
- 47 Cypress d=0.22 h=12
- 48 Cypress d=0.22 h=12
- 49 Prunus d=0.28 h=9
- 50 S Birch d=0.28 h=14
- 51 Cypress d=0.23 h=12
- 52 Cypress d=0.2 h=4
- 53 Cypress d=0.06 h=2
- 54 Cypress d=0.17 h=6
- 55 Shrub multibole h=2.5
- 56 Shrub multibole h=4
- 57 Shrub multibole h=3
- 58 Hazel multibole h=6
- 59 Hazel multibole h=6
- 60 Hazel multibole h=6
- 61 Laurel multibole h=3
- 62 Cypress d=0.13 h=6
- 63 Laurel multibole h=2
- 64 Cypress d=0.13 h=2
- 65 Laurel multibole h=2
- 66 Indian Bean d=0.25 h=10
- 67 Cypress d=0.3 h=14
- 68 Cypress d=0.25 h=14
- 69 Cypress d=0.25 h=14
- 70 Cypress d=0.15 h=11

Key

-  Existing trees and shrubs
-  Root Protection Area (RPA) designated by Heritage Tree Services



Appendix B




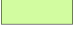





© Purple Architects Ltd. Do not scale off drawing. Check all dimensions on site and advise any discrepancies before commencing work. All figured dimensions are millimetres unless otherwise stated.

Tree Schedule

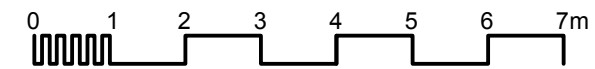
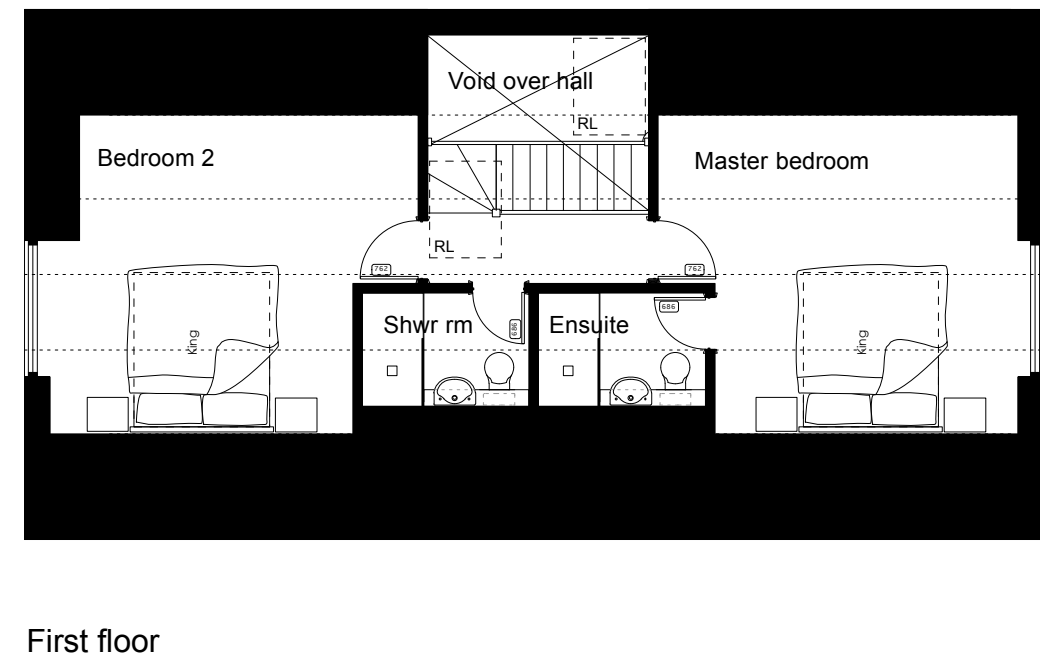
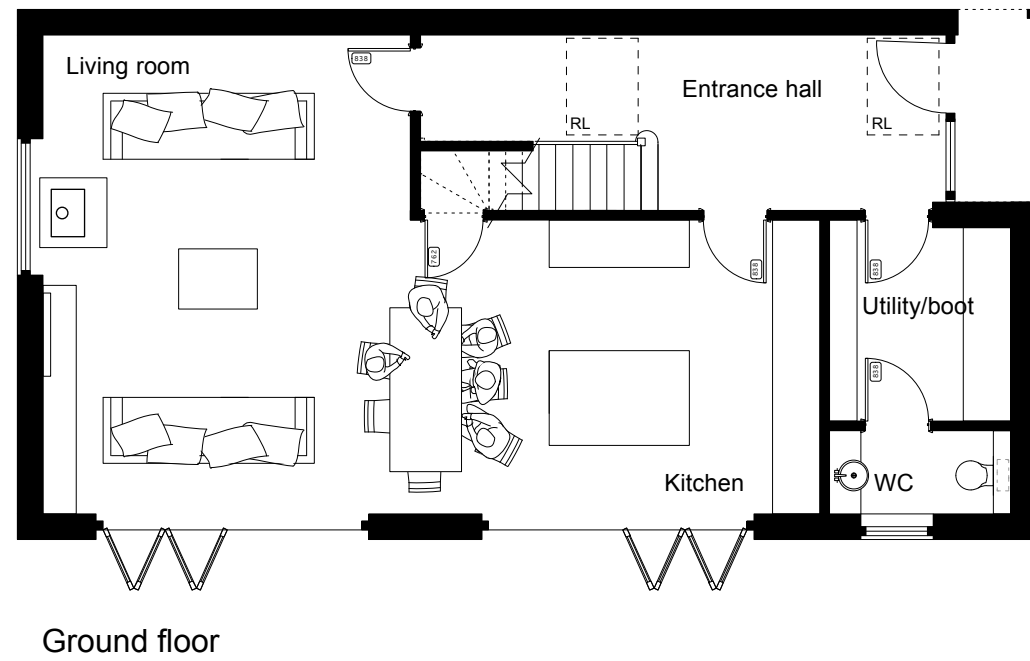
- 1 Cypress multibole h=11
- 2 (?) d=0.18 h=9
- 3 Cypress d=0.2 h=9
- 4 Beech d=0.55 h=17
- 5 Pine d=0.55 h=17
- 6 Cypress d=0.18 h=6
- 7 Spruce d=0.17 h=7
- 8 Fir d=0.5 h=10
- 9 Hazel multibole h=4
- 10 Cypress d=0.15 h=5
- 11 Cypress d=0.18 h=8
- 12 Cypress d=0.2 h=5
- 13 Walnut d=0.55 h=13
- 14 Cypress d=2x0.23 h=14
- 15 Cypress d=0.17 h=7
- 16 Cypress d=0.15 h=6
- 17 Cypress d=0.15 h=4
- 18 Cypress d=0.13 h=4
- 19 Cypress d=0.18 h=12
- 20 Cypress d=0.18 h=12
- 21 Cypress d=0.18 h=5
- 22 Prunus multibole h=4
- 23 Cypress d=0.25 h=12
- 24 Cypress d=0.18 h=10
- 25 Cypress d=0.13 h=9
- 26 Pine d=0.27 h=14
- 27 Cypress d=0.15 h=12
- 28 Cypress d=0.2 h=12
- 29 Cypress d=0.22 h=12
- 30 Cypress multibole h=7
- 31 Cypress d=0.26 h=12
- 32 Cypress d=0.13 h=7
- 33 Sycamore d=0.4 h=12
- 34 Hazel multibole h=7
- 35 Ash d=0.18 h=10
- 36 Sycamore d=0.25 h=10
- 37 (?) multibole h=4
- 38 Cypress d=0.16 h=12
- 39 Cypress d=0.22 h=12
- 40 Cypress d=0.15 h=12
- 41 Cypress d=0.18 h=12
- 42 Cypress d=0.22 h=12
- 43 Cypress d=0.25 h=12
- 44 Cypress d=0.25 h=12
- 45 Cypress d=0.2 h=12
- 46 Cypress d=0.2 h=12
- 47 Cypress d=0.22 h=12
- 48 Cypress d=0.22 h=12
- 49 Prunus d=0.28 h=9
- 50 S Birch d=0.28 h=14
- 51 Cypress d=0.23 h=12
- 52 Cypress d=0.2 h=4
- 53 Cypress d=0.06 h=2
- 54 Cypress d=0.17 h=6
- 55 Shrub multibole h=2.5
- 56 Shrub multibole h=4
- 57 Shrub multibole h=3
- 58 Hazel multibole h=6
- 59 Hazel multibole h=6
- 60 Hazel multibole h=6
- 61 Laurel multibole h=3
- 62 Cypress d=0.13 h=6
- 63 Laurel multibole h=2
- 64 Cypress d=0.13 h=2
- 65 Laurel multibole h=2
- 66 Indian Bean d=0.25 h=10
- 67 Cypress d=0.3 h=14
- 68 Cypress d=0.25 h=14
- 69 Cypress d=0.25 h=14
- 70 Cypress d=0.15 h=11

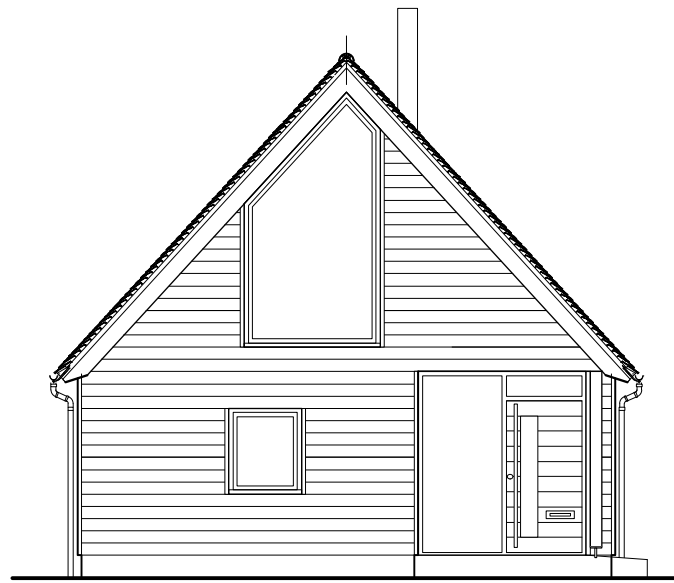
Key

-  Existing trees and shrubs to be retained
-  Existing hedging to be retained
-  Proposed new hedging
-  New / retained lawns
-  Hard landscaped surfaces
-  New / retained driveway / parking area
-  Root Protection Area (RPA) designated by Heritage Tree Services

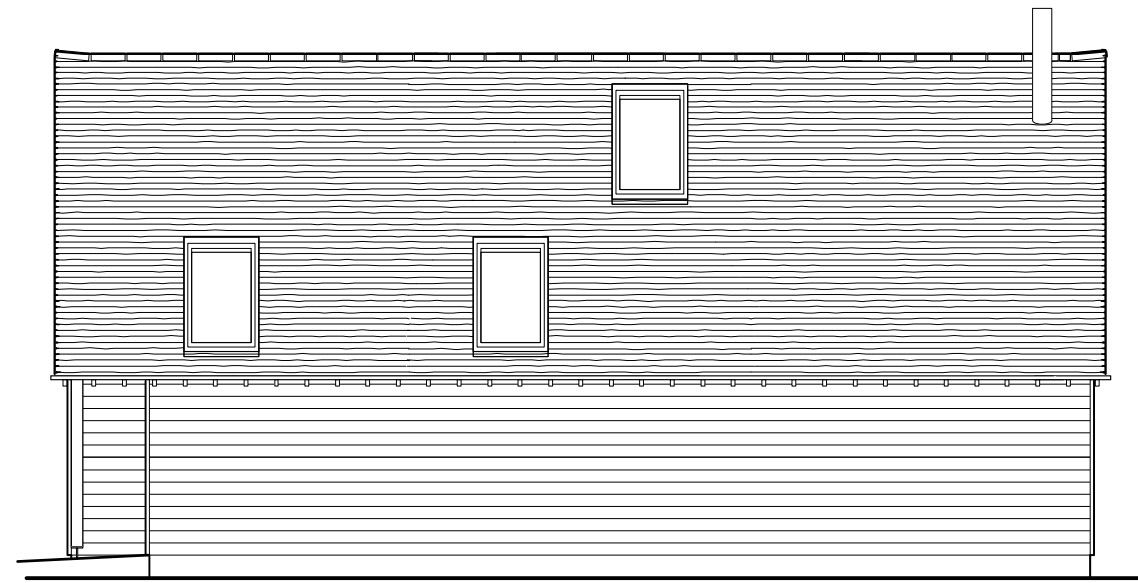


2-bedroomed house		
Gross internal floor areas:		
Ground floor	78.73 m2	846 ft2
First floor	48.50 m2	521 ft2
Total	127.23 m2	1367 ft2





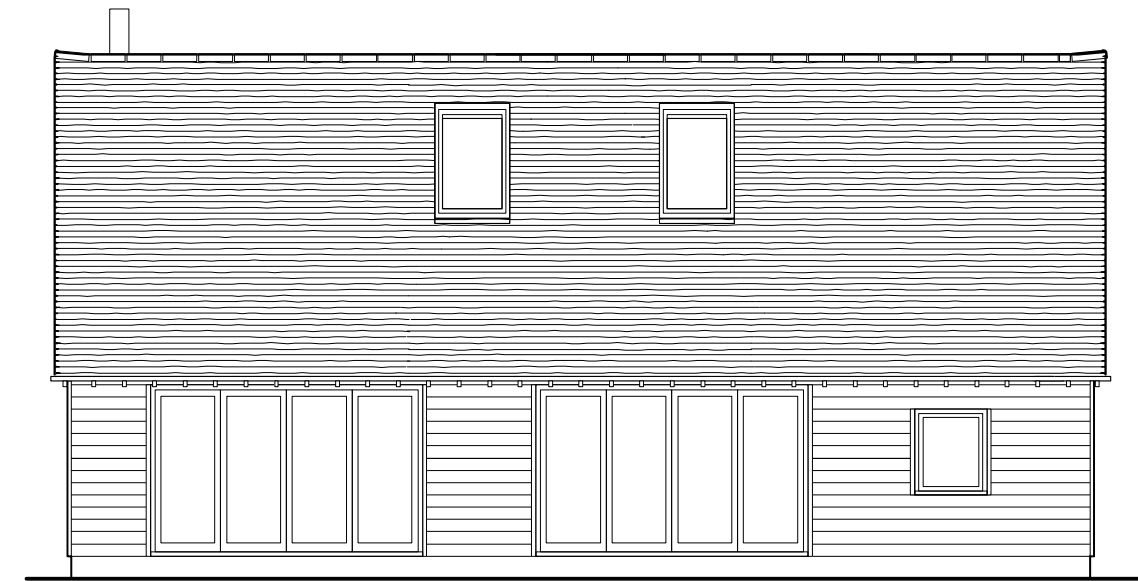
Front elevation



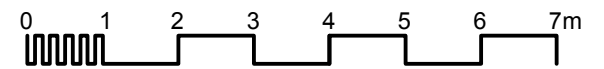
Side elevation



Rear elevation



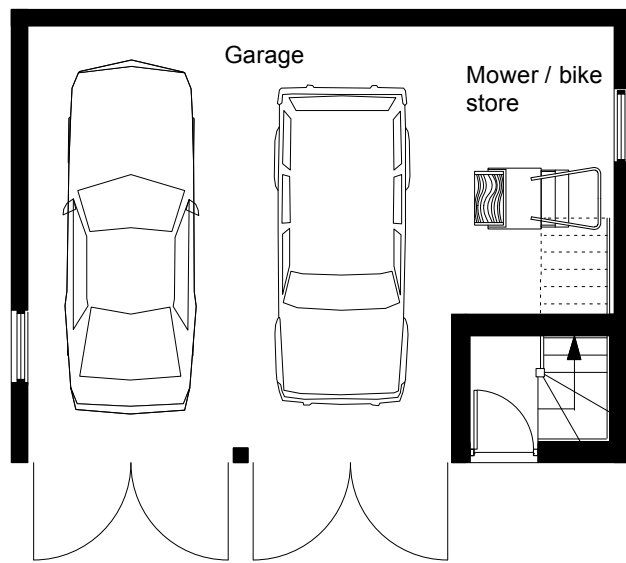
Side elevation



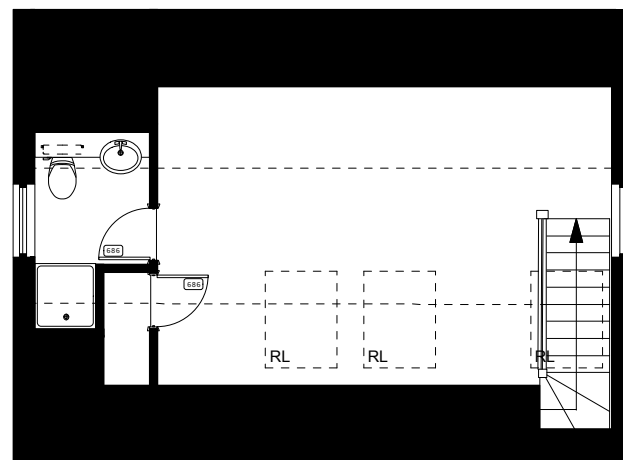
Revisions

White Mark Farm, Watlington
New house - Elevations as proposed

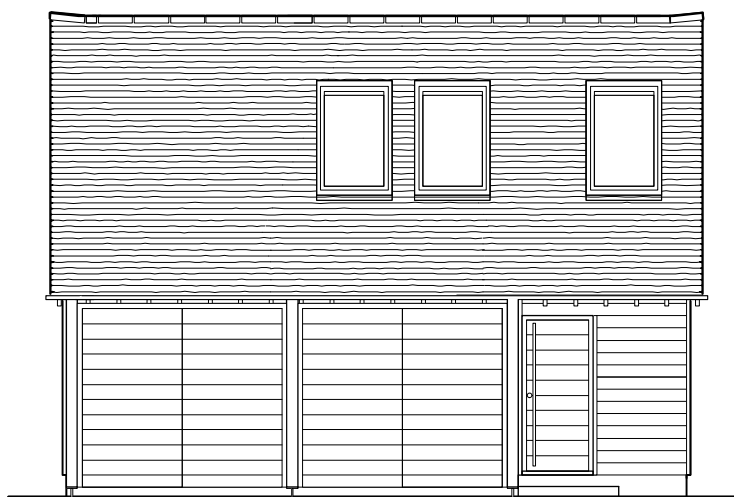
Job No	WMF	Status	P	Dwg	1.50	Revision	B
Scale	1:100 @ A3	Issued for	Planning	Date	April 2017	Revised	02.05.17



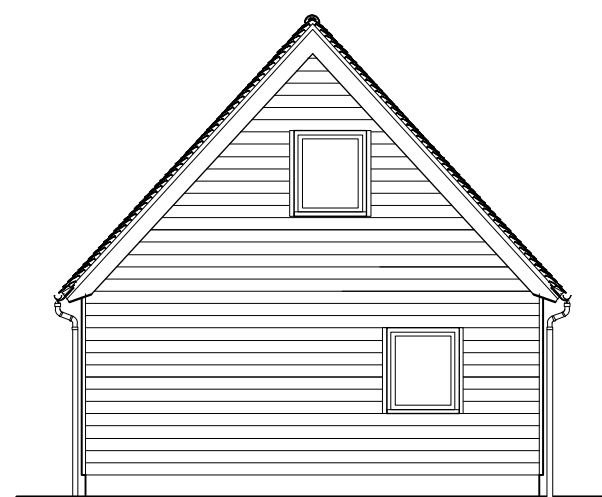
Garage ground floor



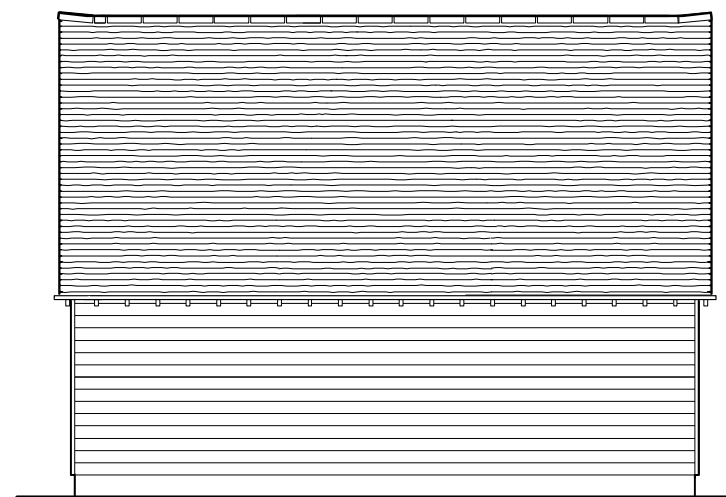
Garage first floor



Front elevation



Side elevation



Rear elevation



Side elevation

